

Neubauten Zyklus 1 | Herzogenbuchsee

Stand Bauprojekt | 03.03.2022 | Orientierung Bevölkerung und Anwohner

ARGE wahlruefli rollimarchini

HÄNGGIBASLER LANDSCHAFTSARCHITEKTUR GMBH

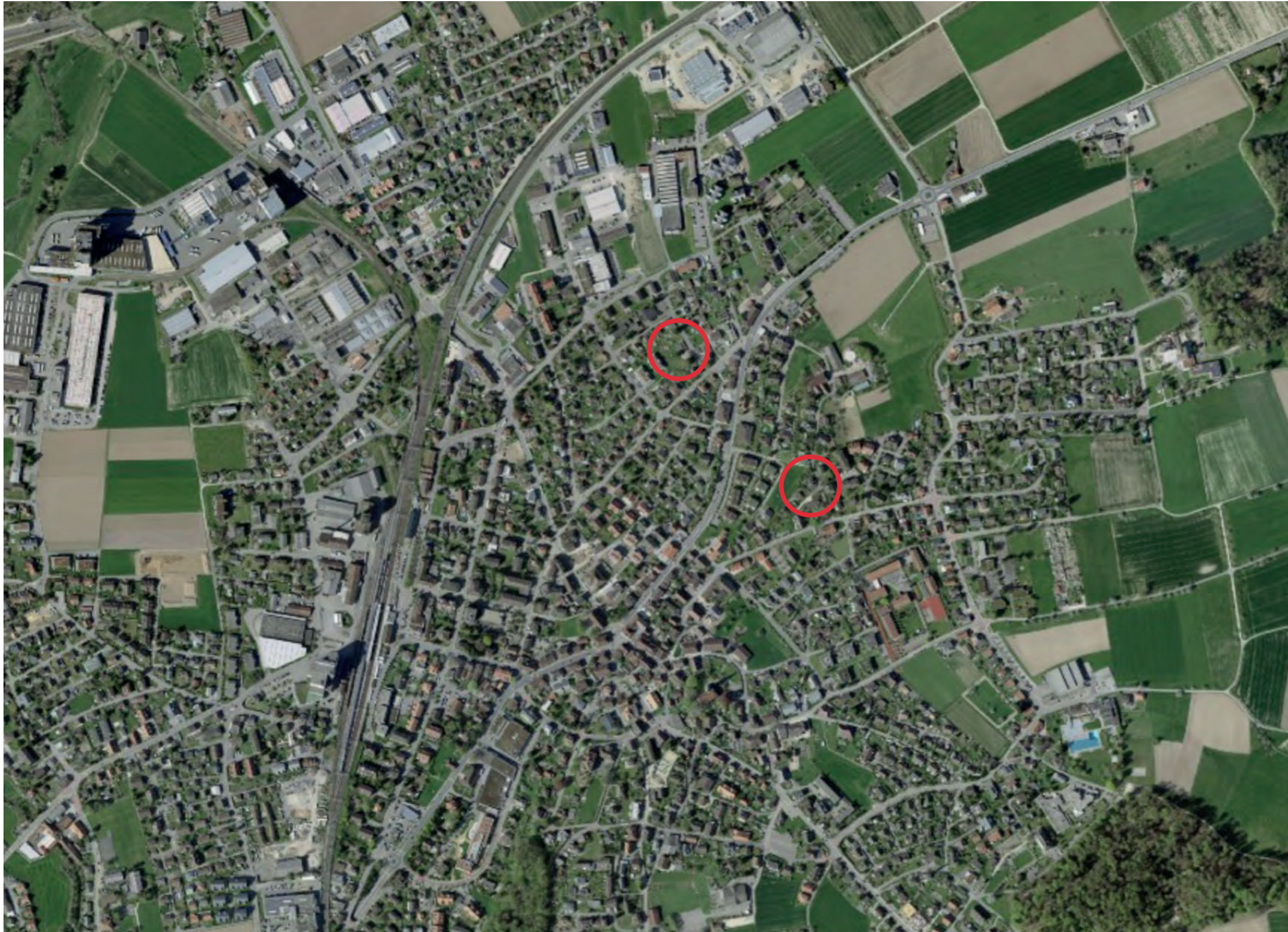


Aufgabenstellung

Standort Rosenweg und Hubelweg

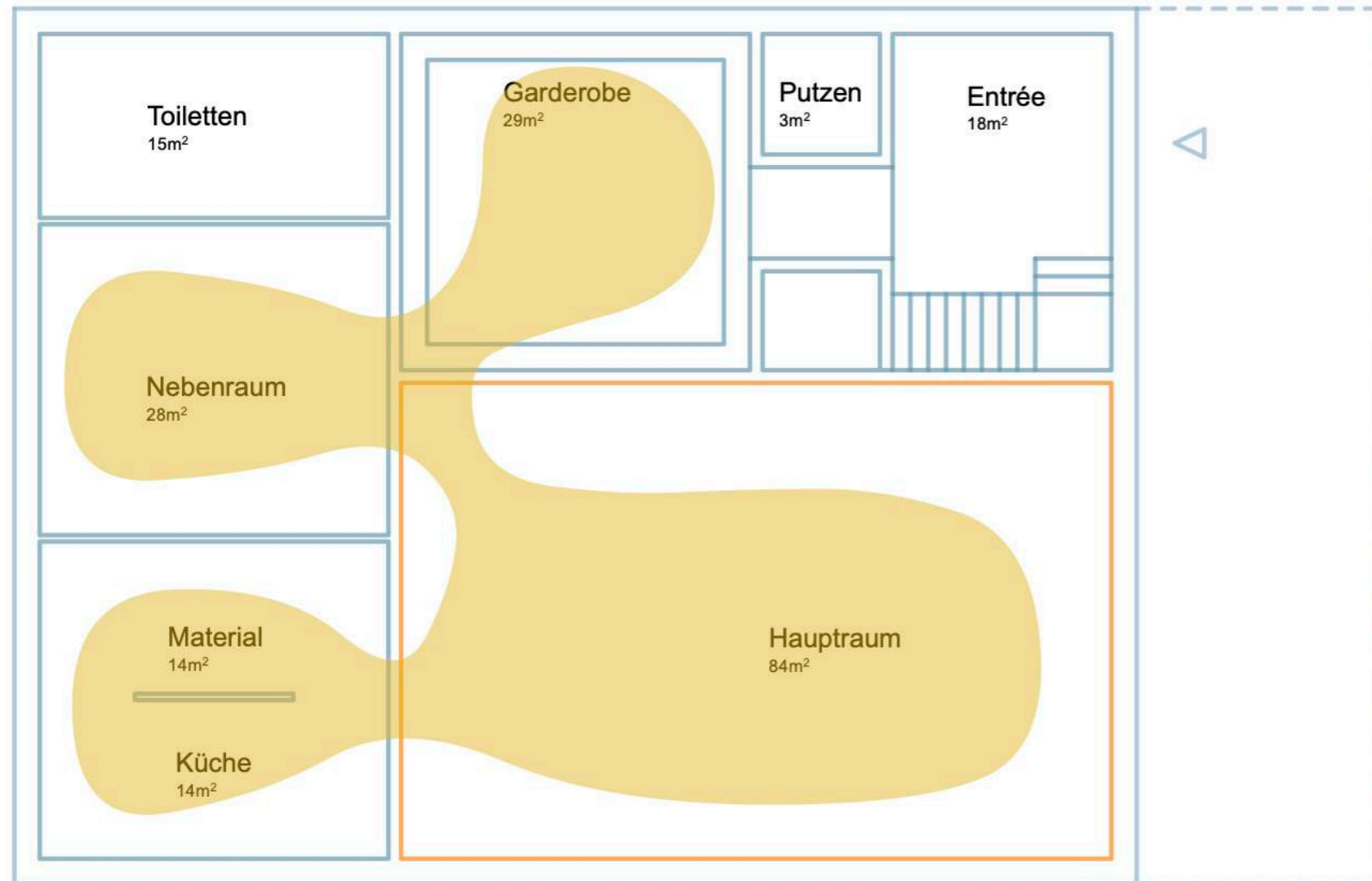
4 Klassen Zyklus 1 je Standort

insgesamt 8 Klassen Zyklus 1



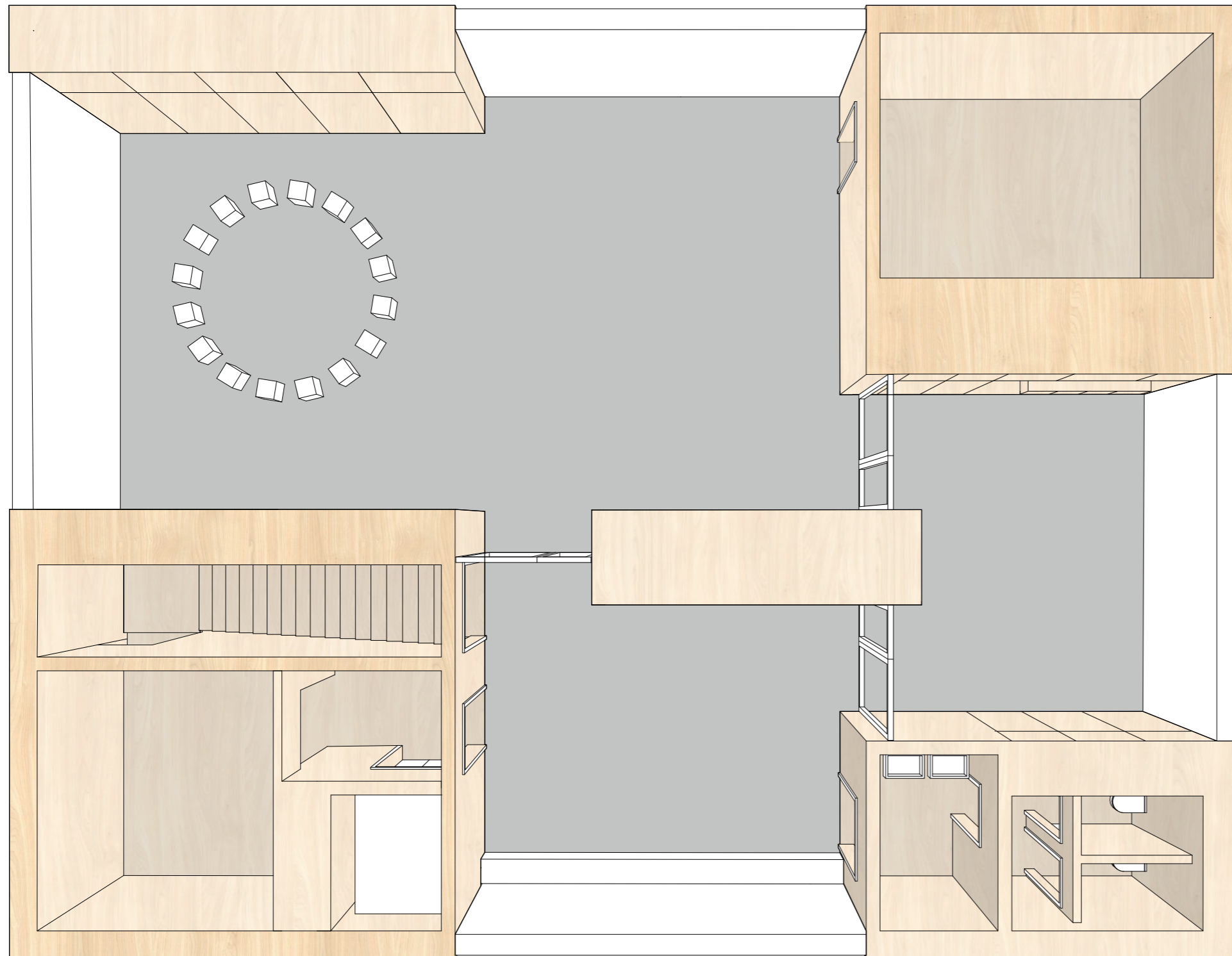
Konzeptidee

Modulgrundriss Boxen



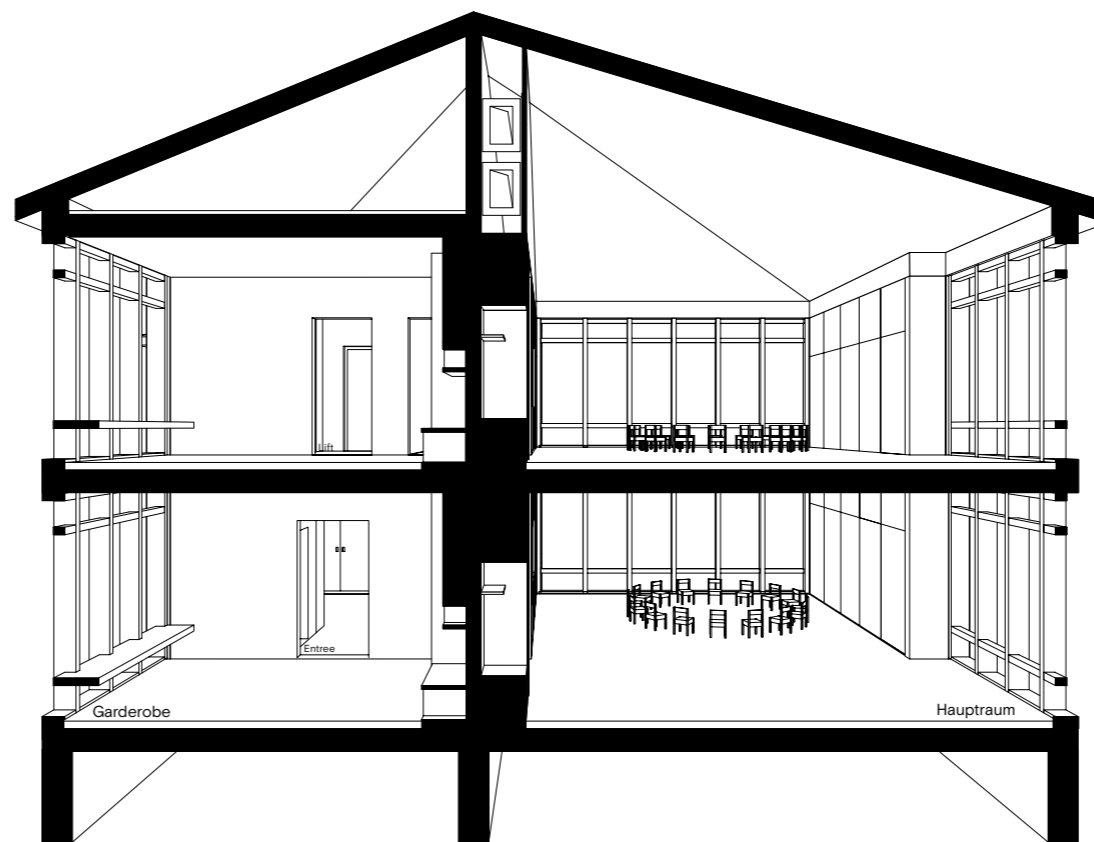
Konzeptidee

Modulgrundriss Boxen



Konzeptidee

Boxen im Schnittmodell



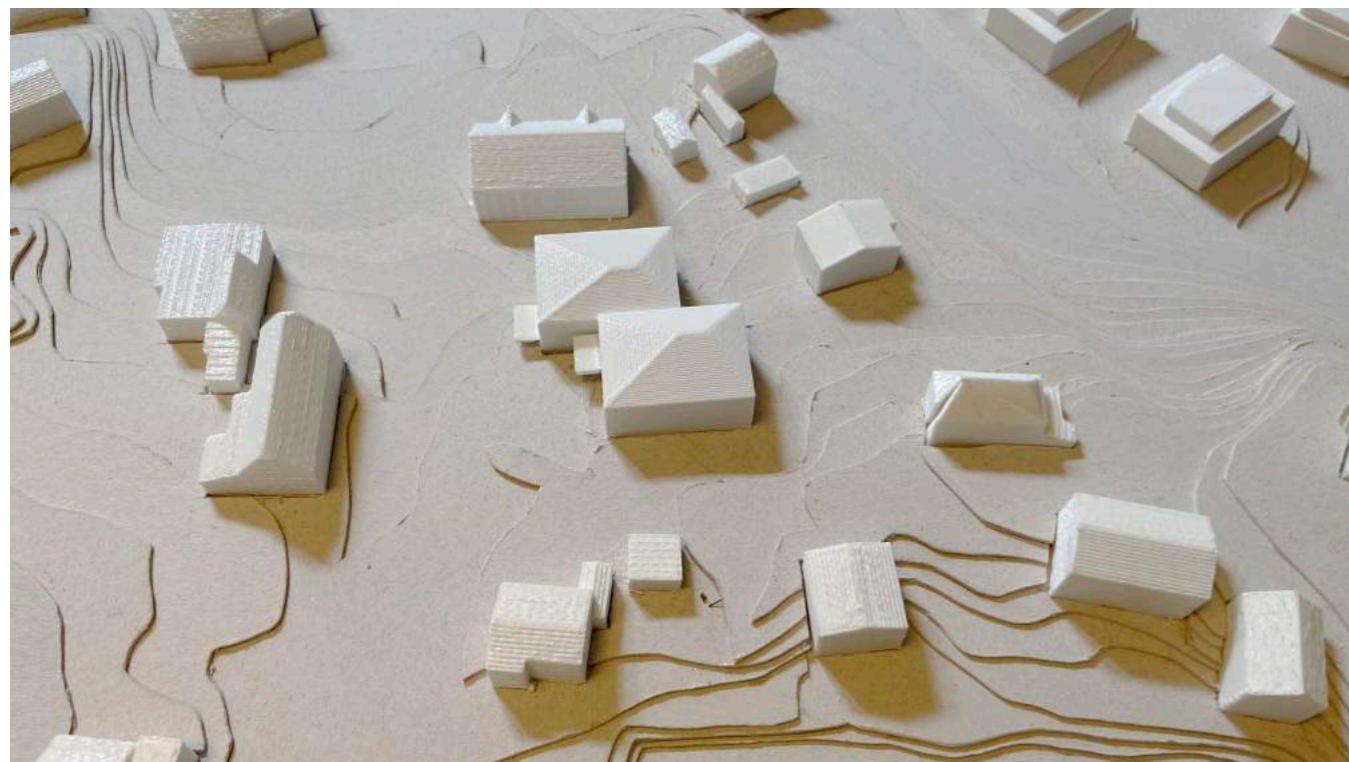
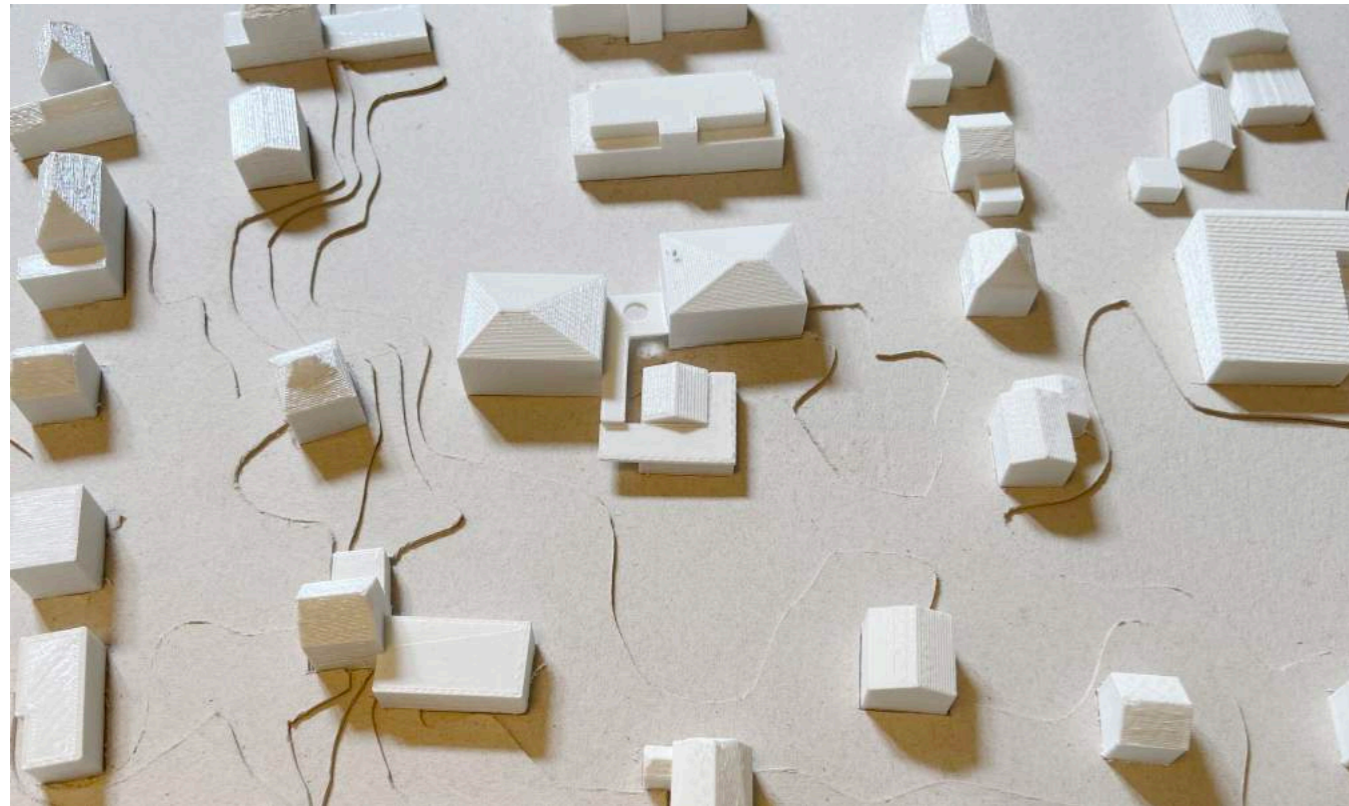
Städtebau

Einpassung in Nachbarschaft



Städtebau

Volumentrische Eingliederung



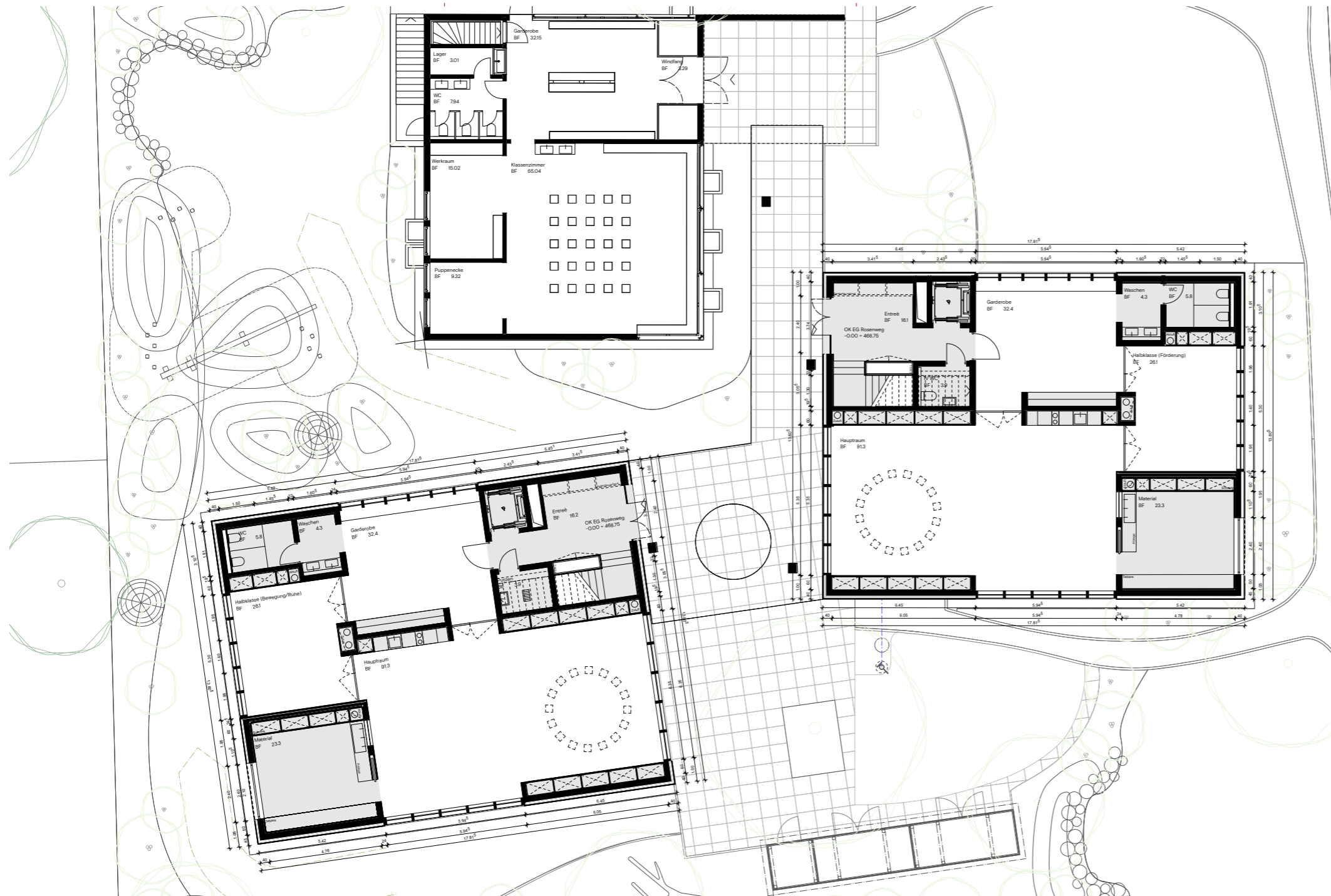
Architektur

Situation Rosenweg

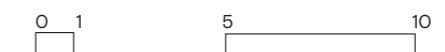


Architektur

Pläne Rosenweg - Grundriss Erdgeschoss

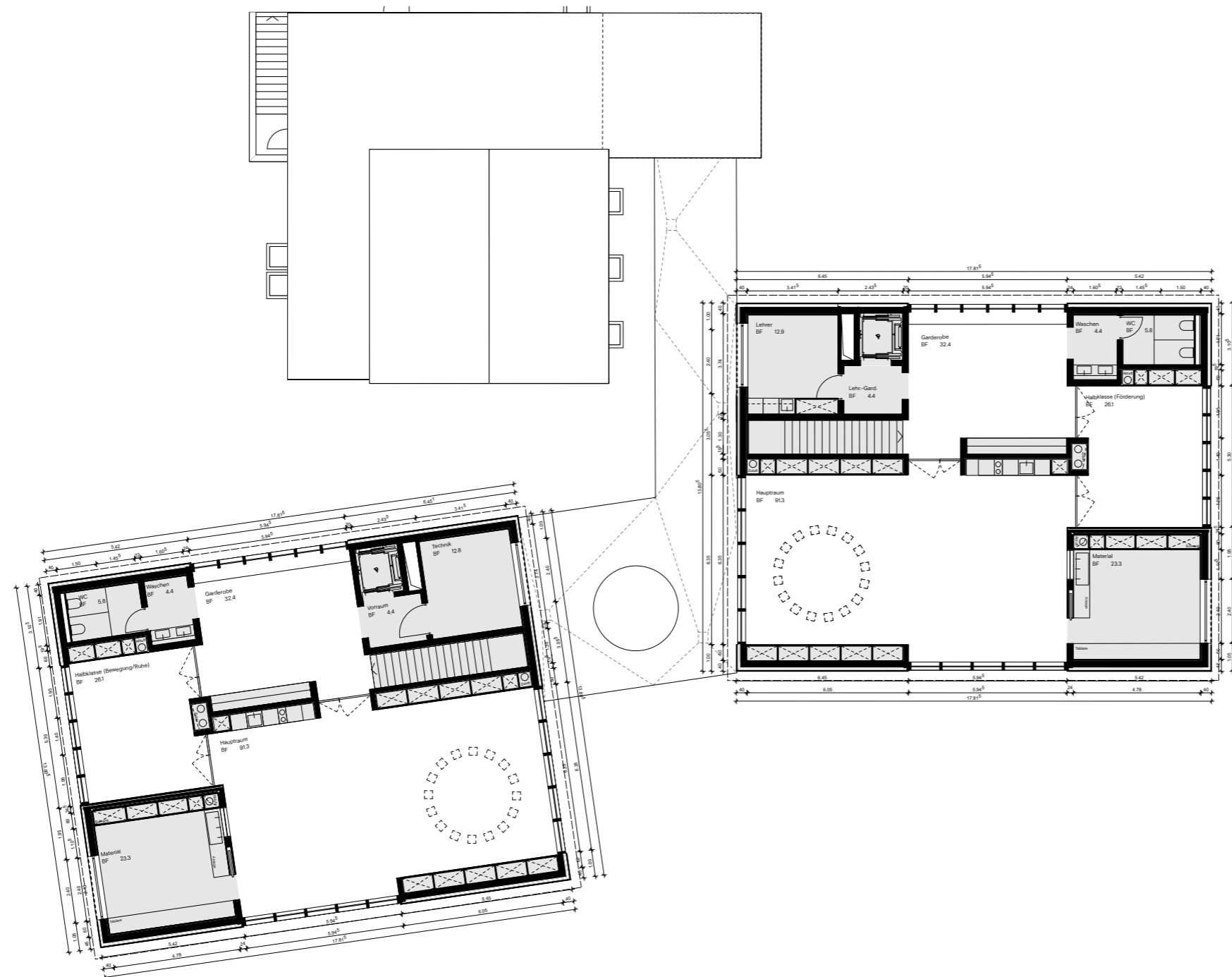


Mst. 1:200

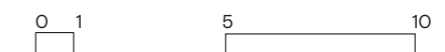


Architektur

Pläne Rosenweg - Grundriss Obergeschoss

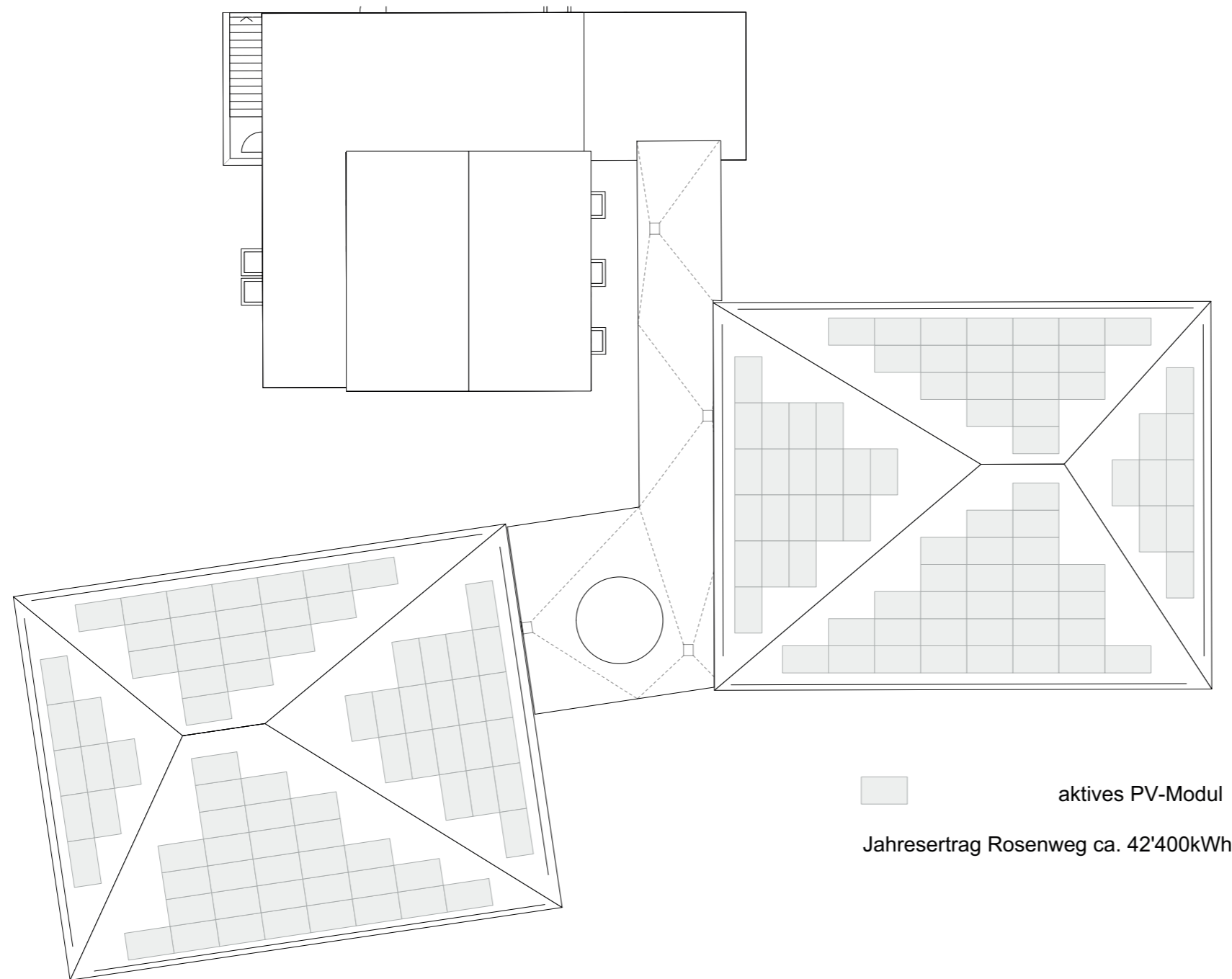


Mst. 1:200

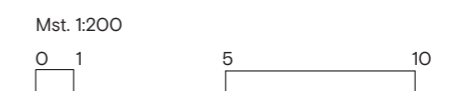


Architektur

Pläne Rosenweg - Grundriss Dachgeschoss

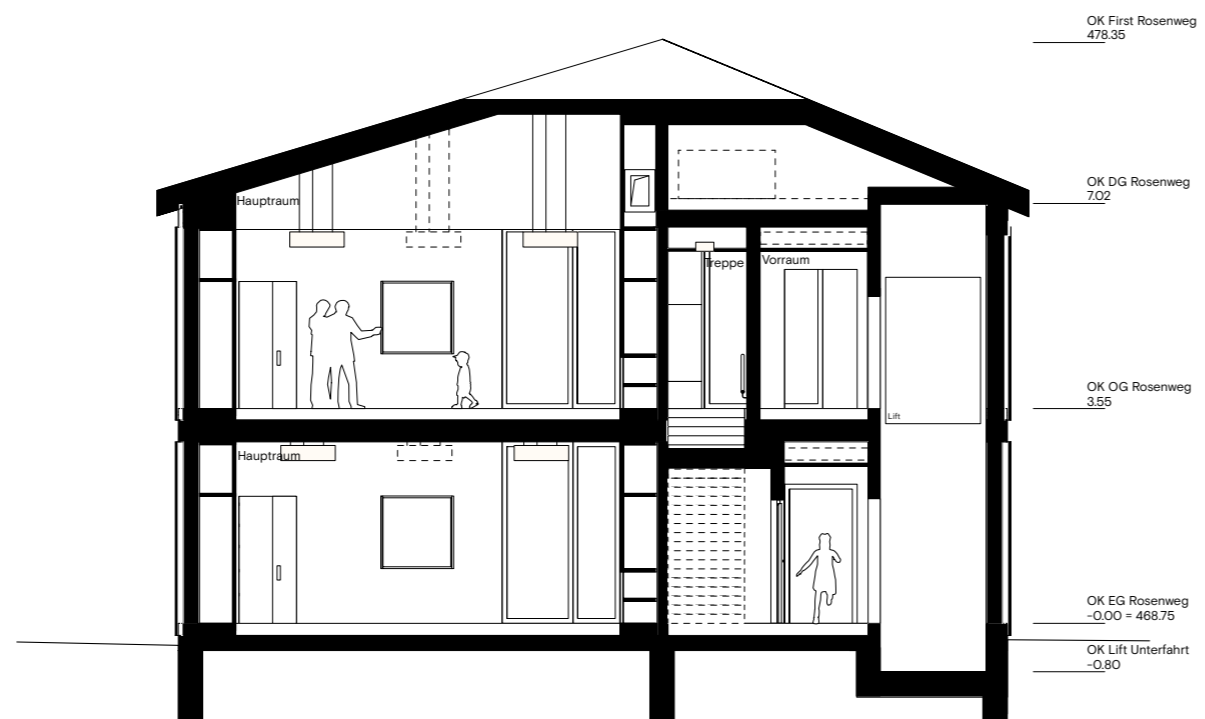


aktives PV-Modul
Jahresertrag Rosenweg ca. 42'400kWh



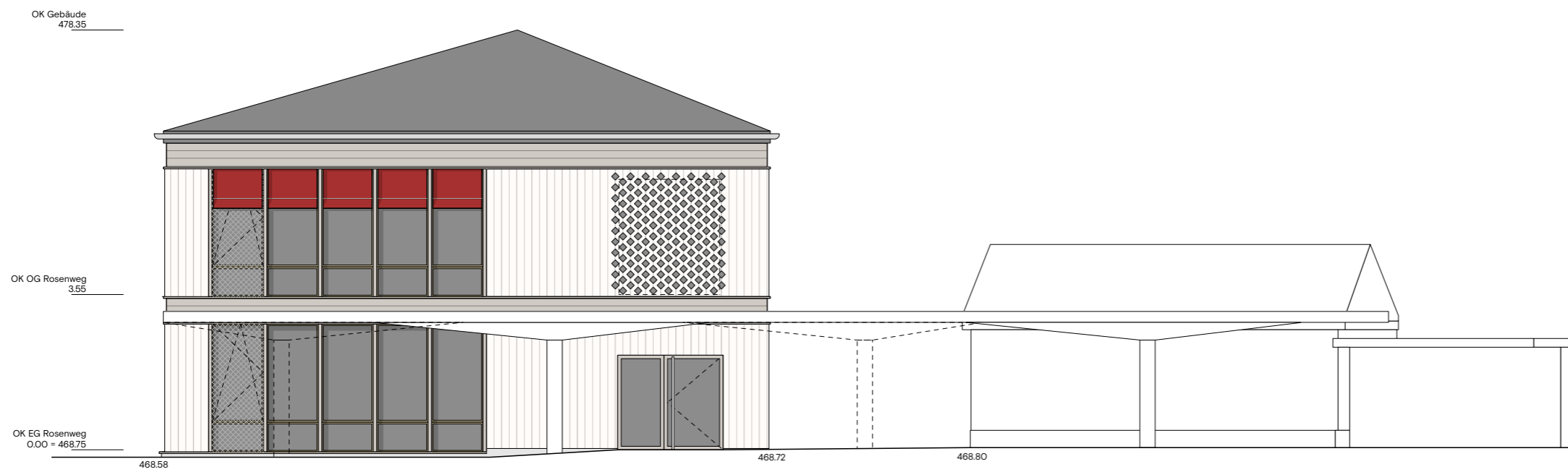
Architektur

Pläne Rosenweg - Querschnitt



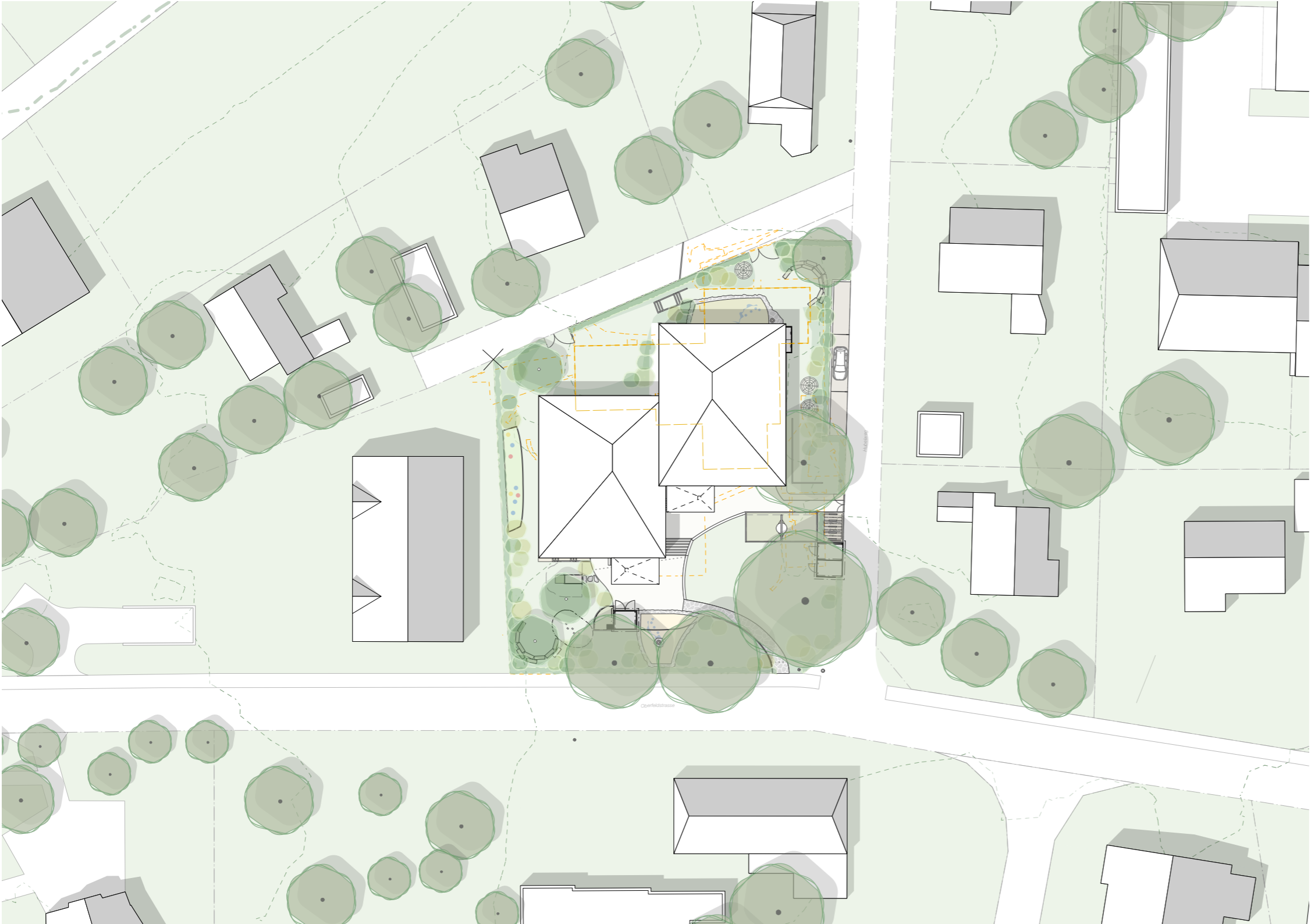
Architektur

Pläne Rosenweg - Ansicht Süd



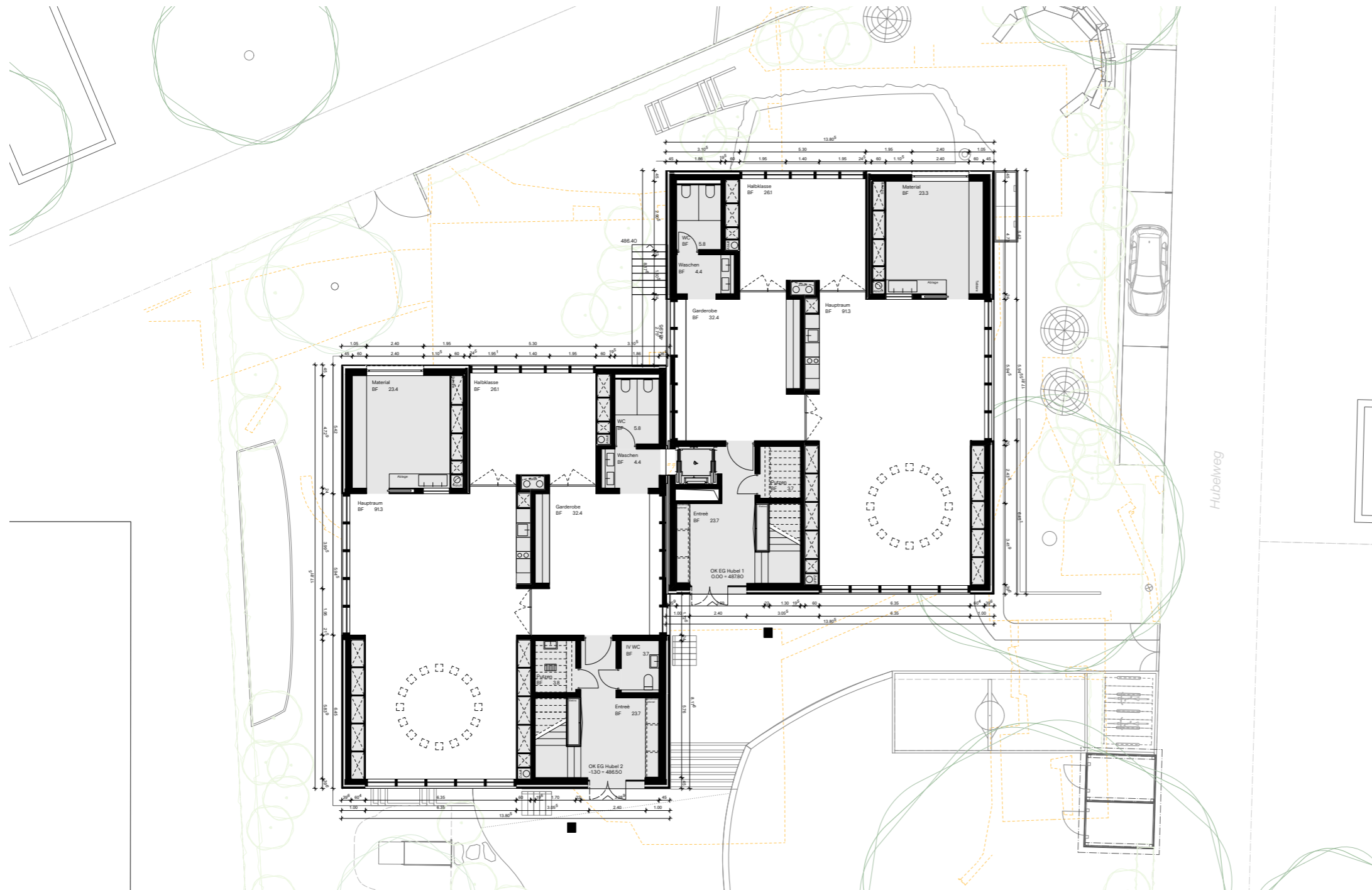
Architektur

Situation Hubelweg



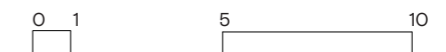
Architektur

Pläne Hubelweg - Grundriss Erdgeschoss



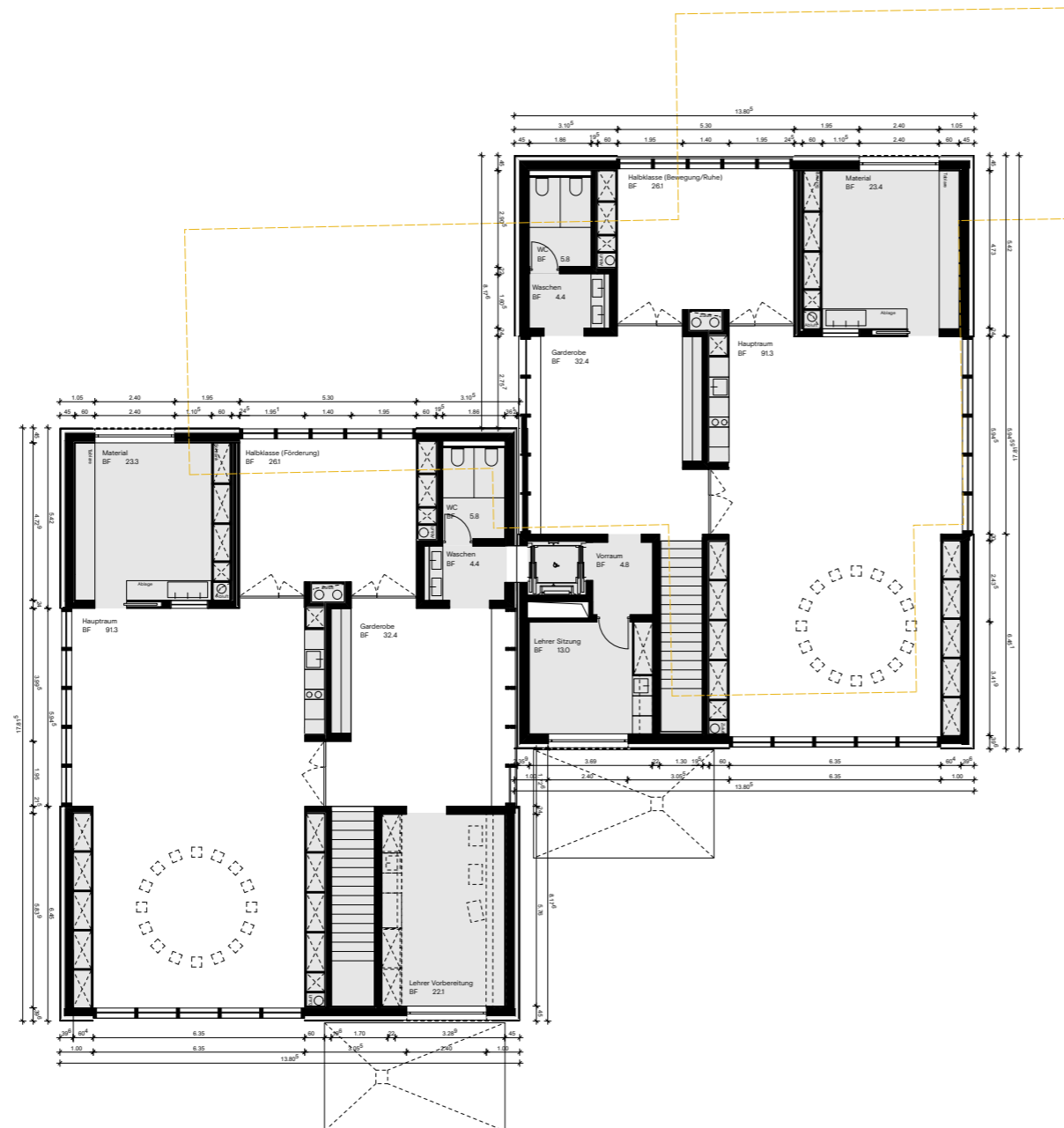
Hubelweg

Mst. 1:200

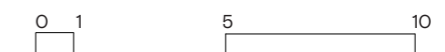


Architektur

Pläne Hubelweg - Grundriss Obergeschoss

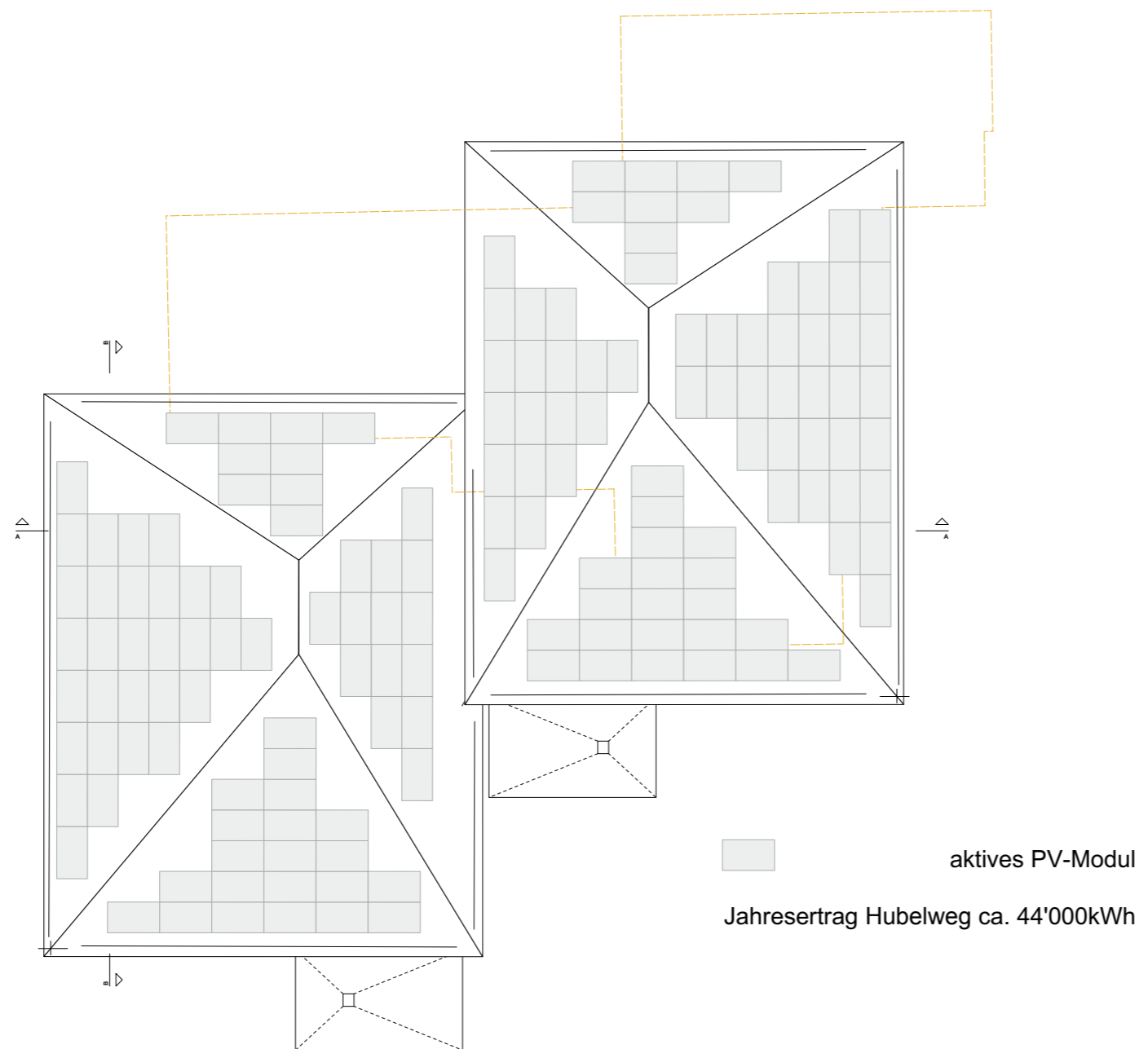


Mst. 1:200

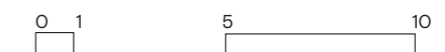


Architektur

Pläne Hubelweg - Grundriss Dachgeschoss

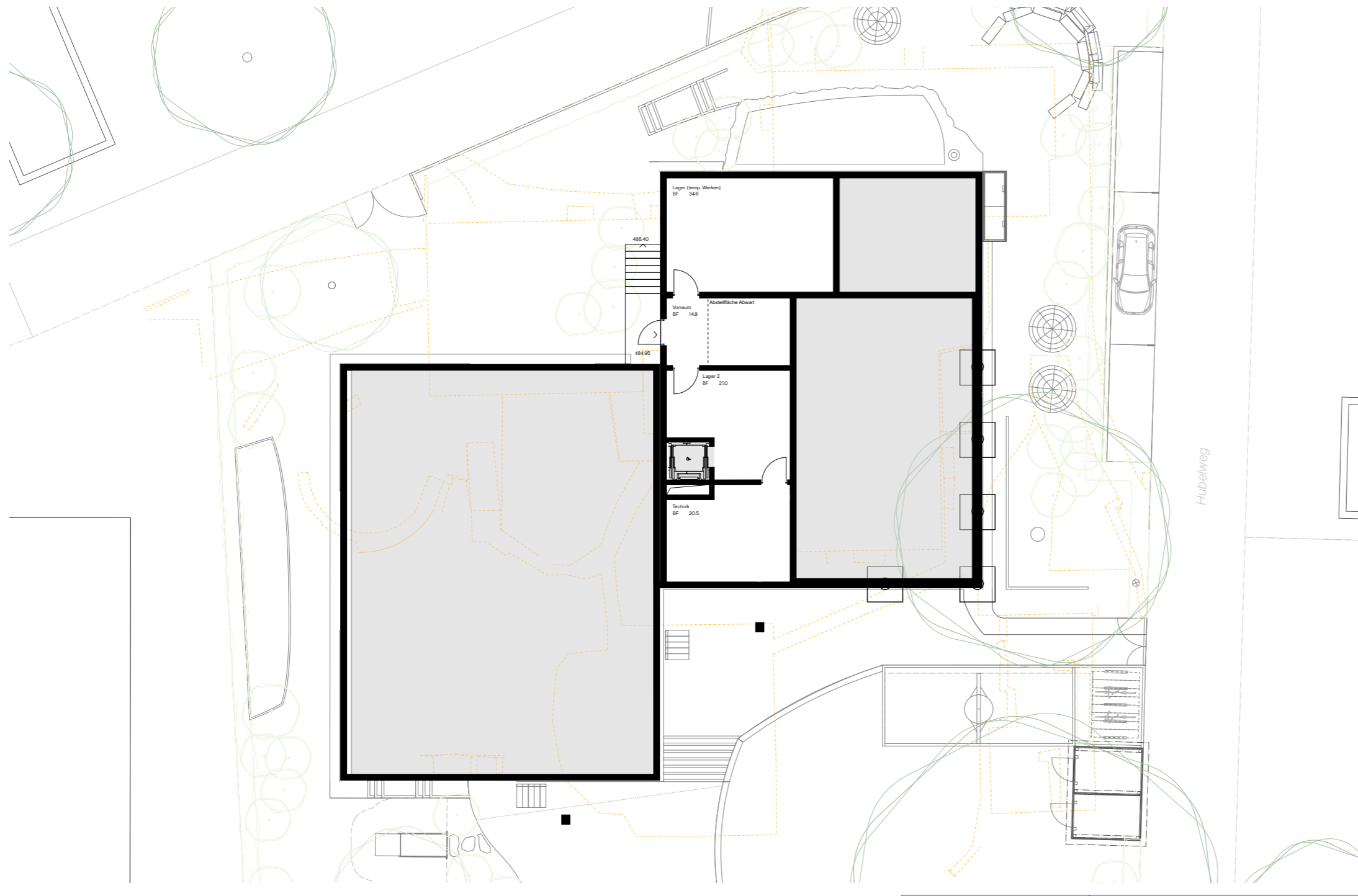


Mst. 1:200



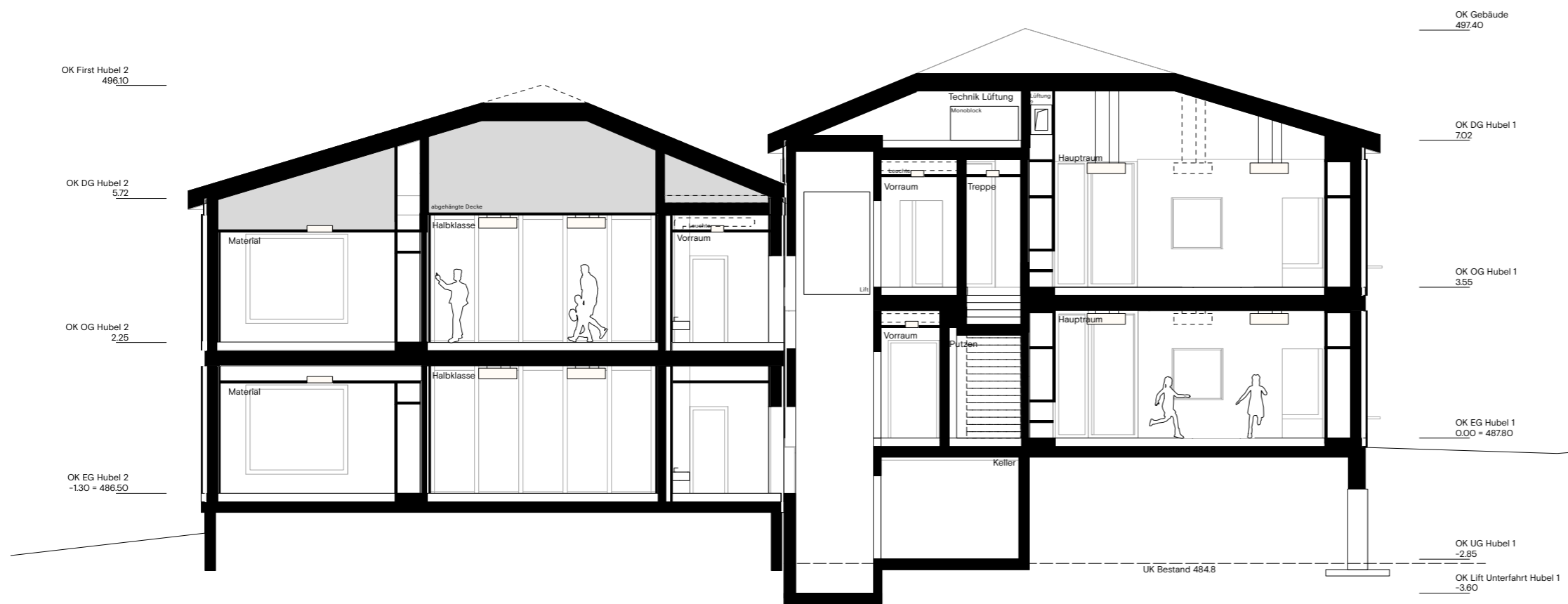
Architektur

Pläne Hubelweg - Grundriss Teilunterkellerung



Architektur

Pläne Hubelweg - Querschnitt



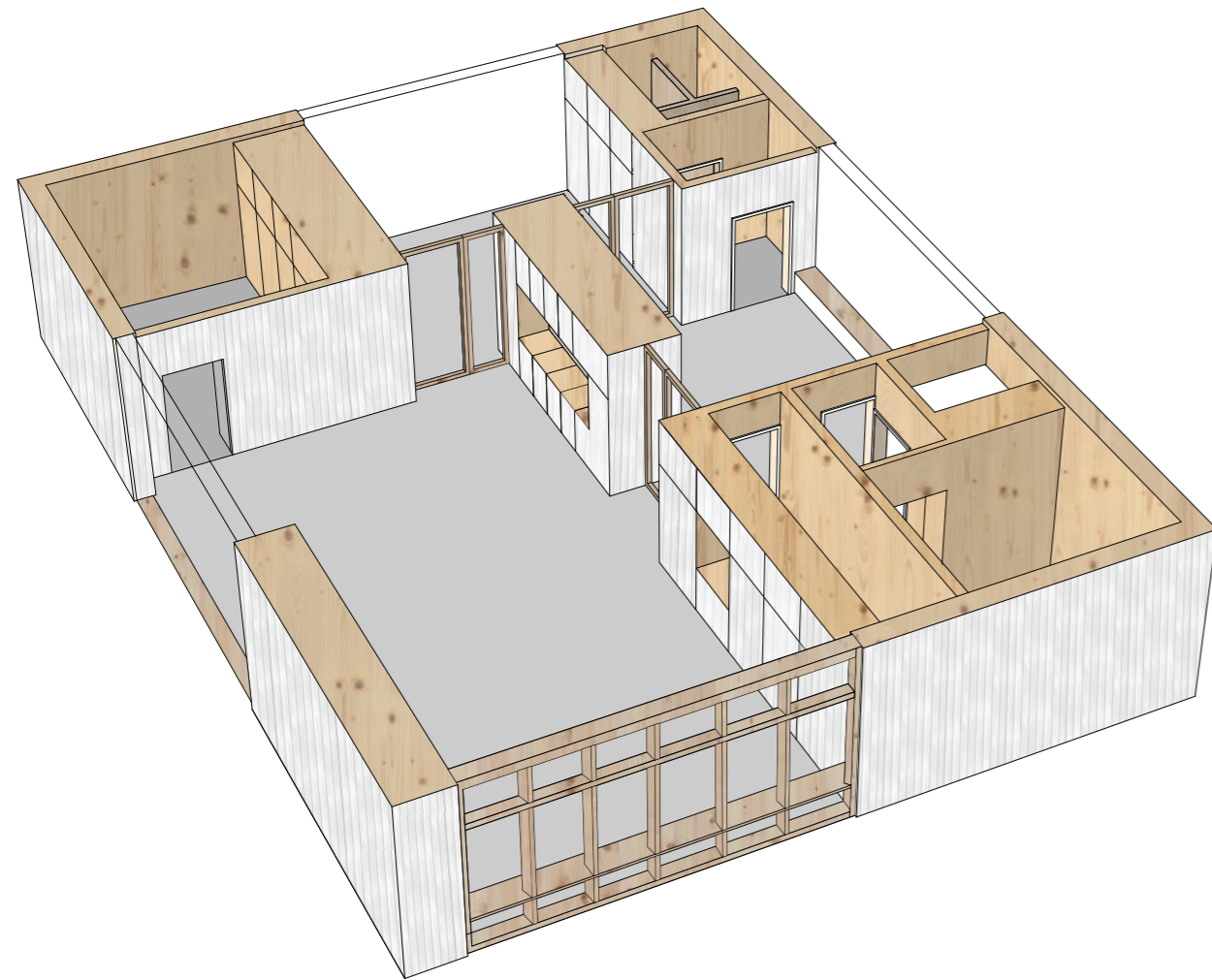
Architektur

Pläne Hubelweg - Ansicht Süd



Architektur

Materialkonzept



Referenz Holzfassade



Referenz Innenraum

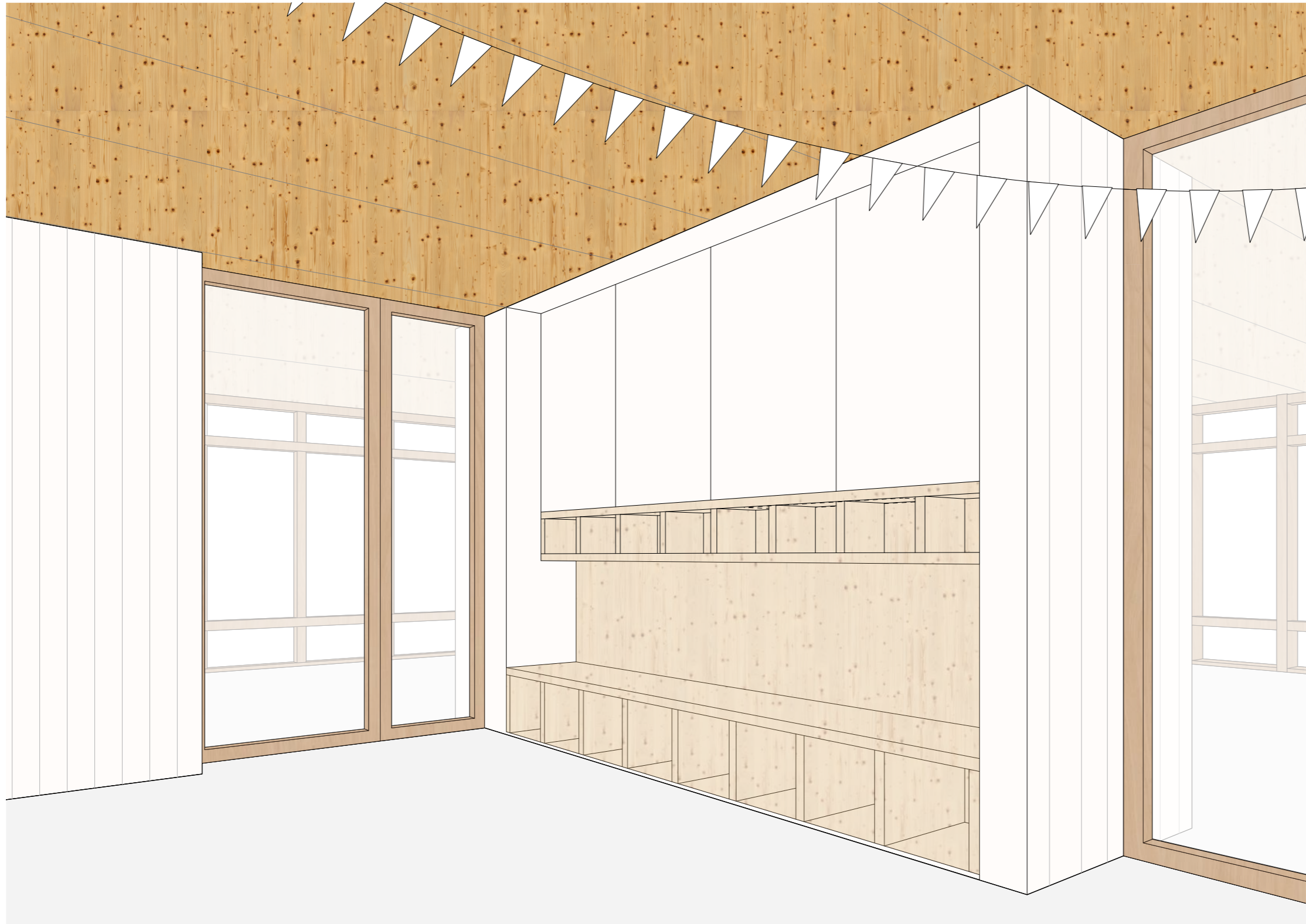
Architektur

Materialkonzept



Architektur

Materialkonzept



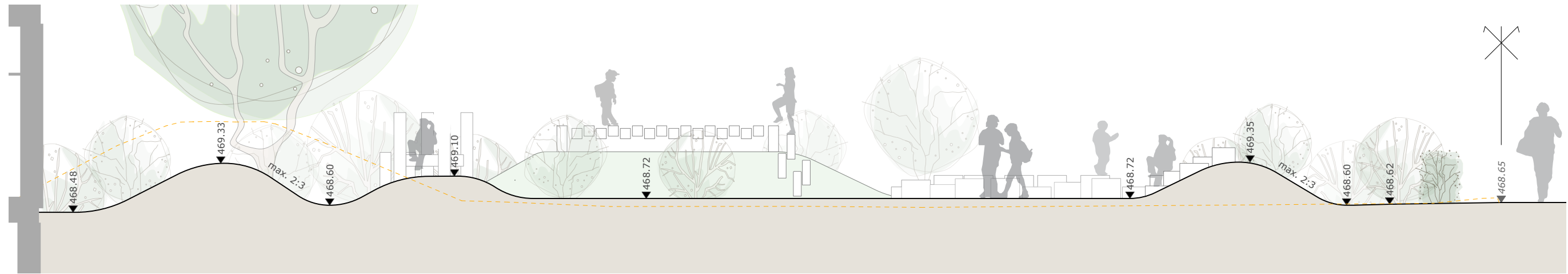
Architektur

Materialkonzept









Schnitt A-A' | 1:75

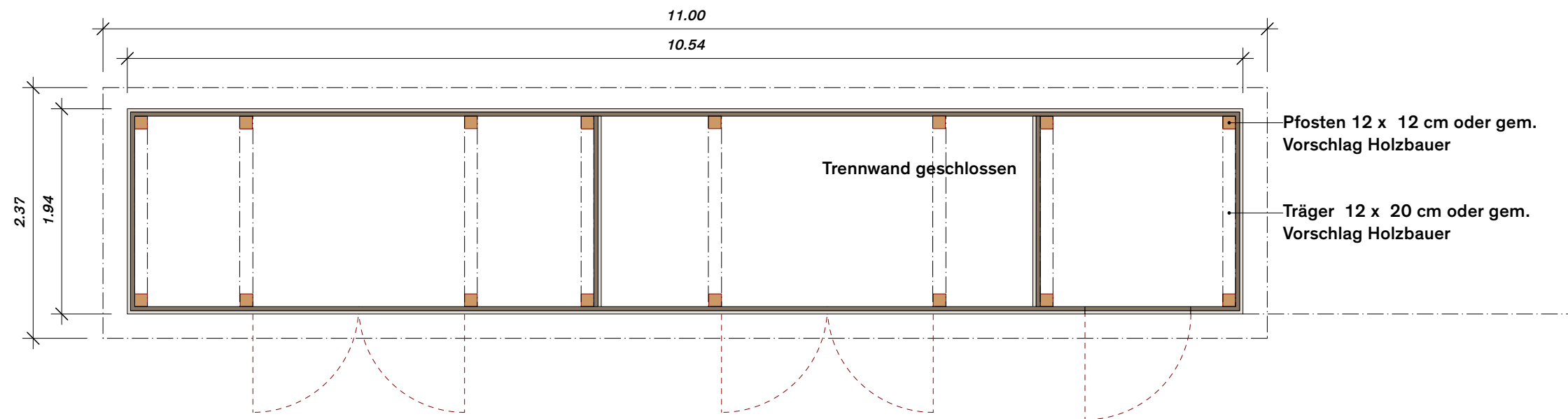
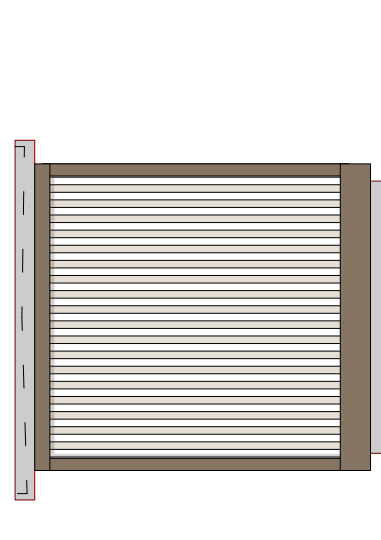
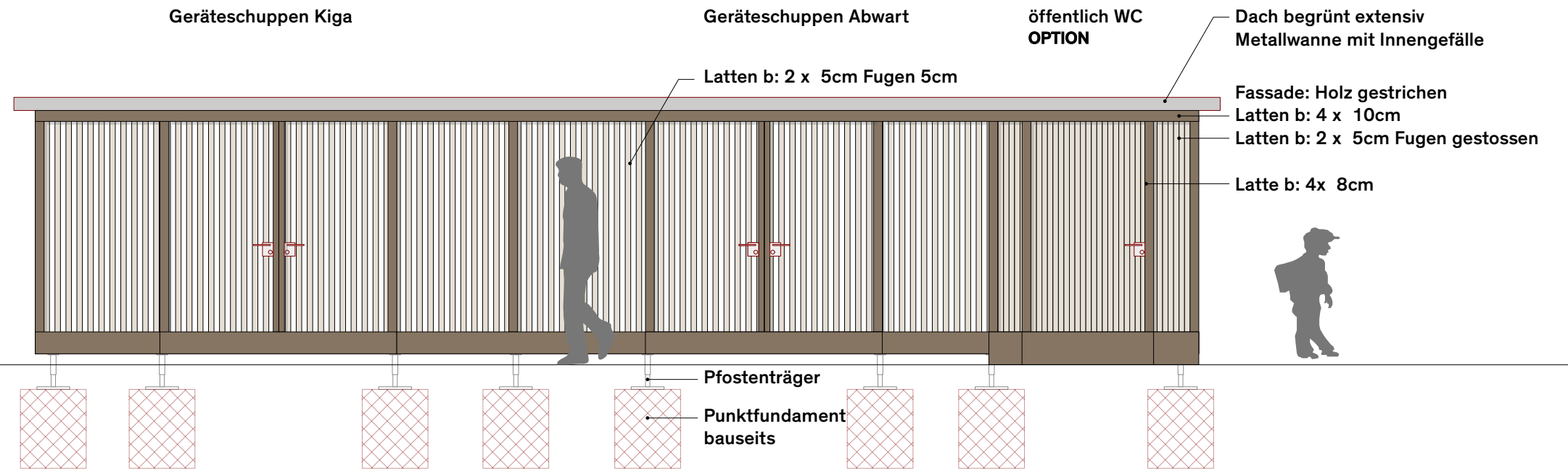


Schnitt C-C' | 1:175



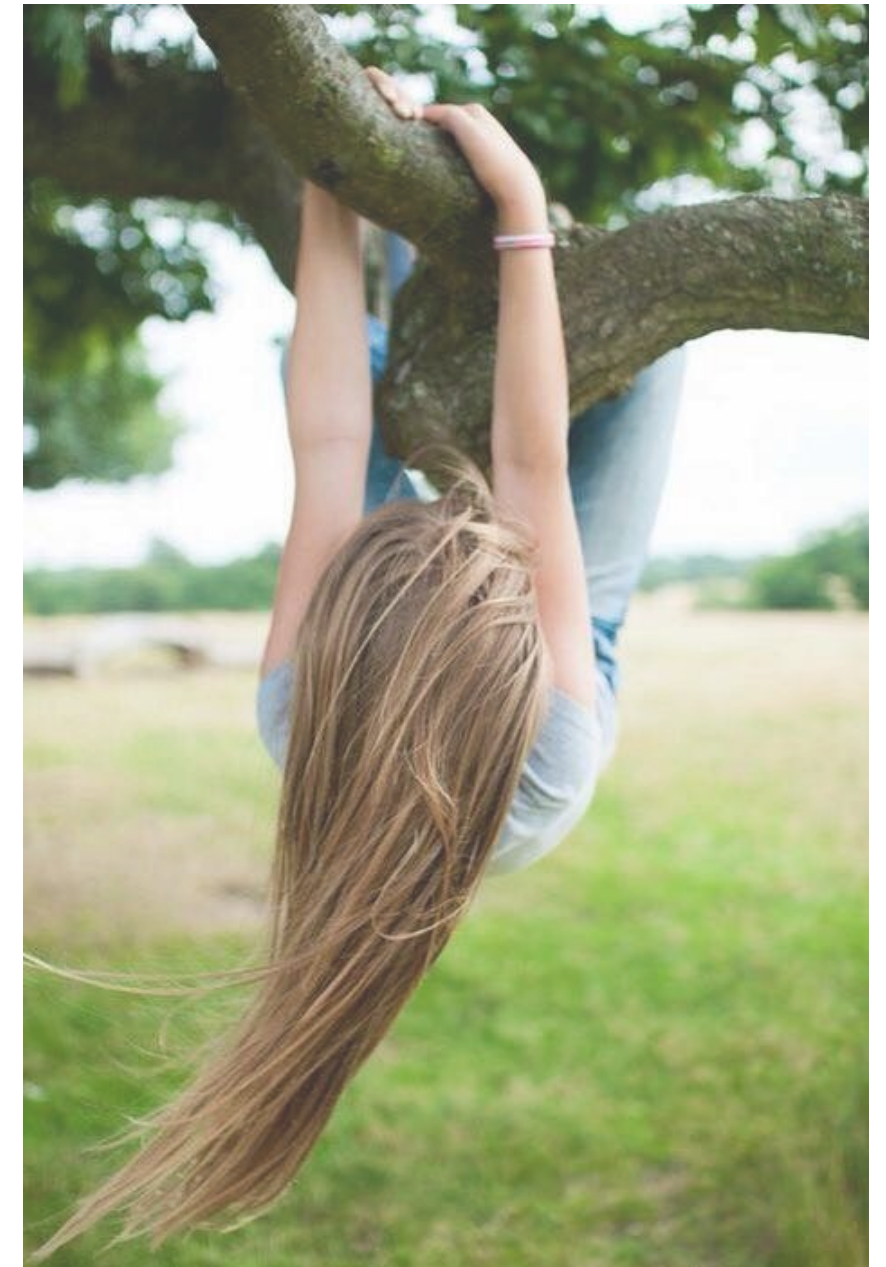
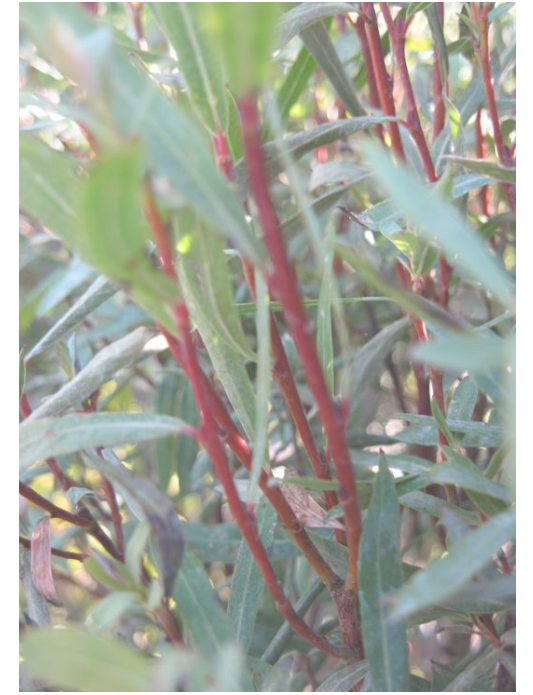
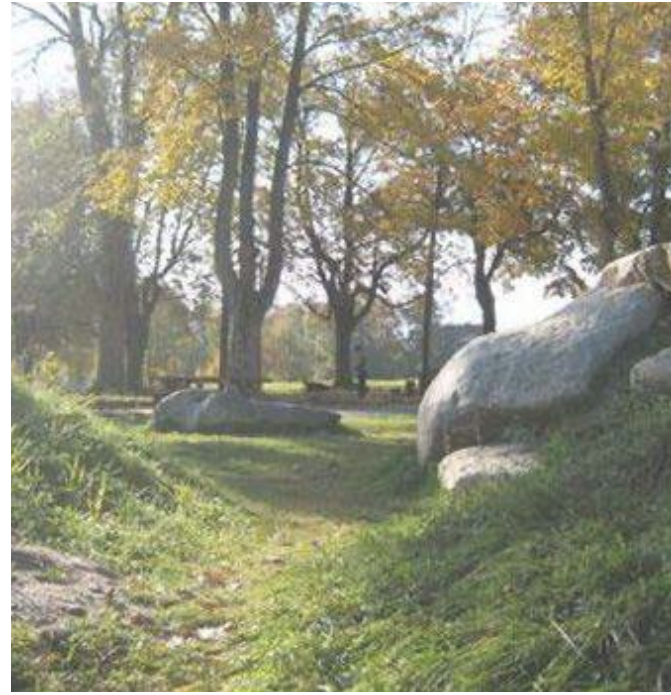
Rosenweg:
Nebenzbau C

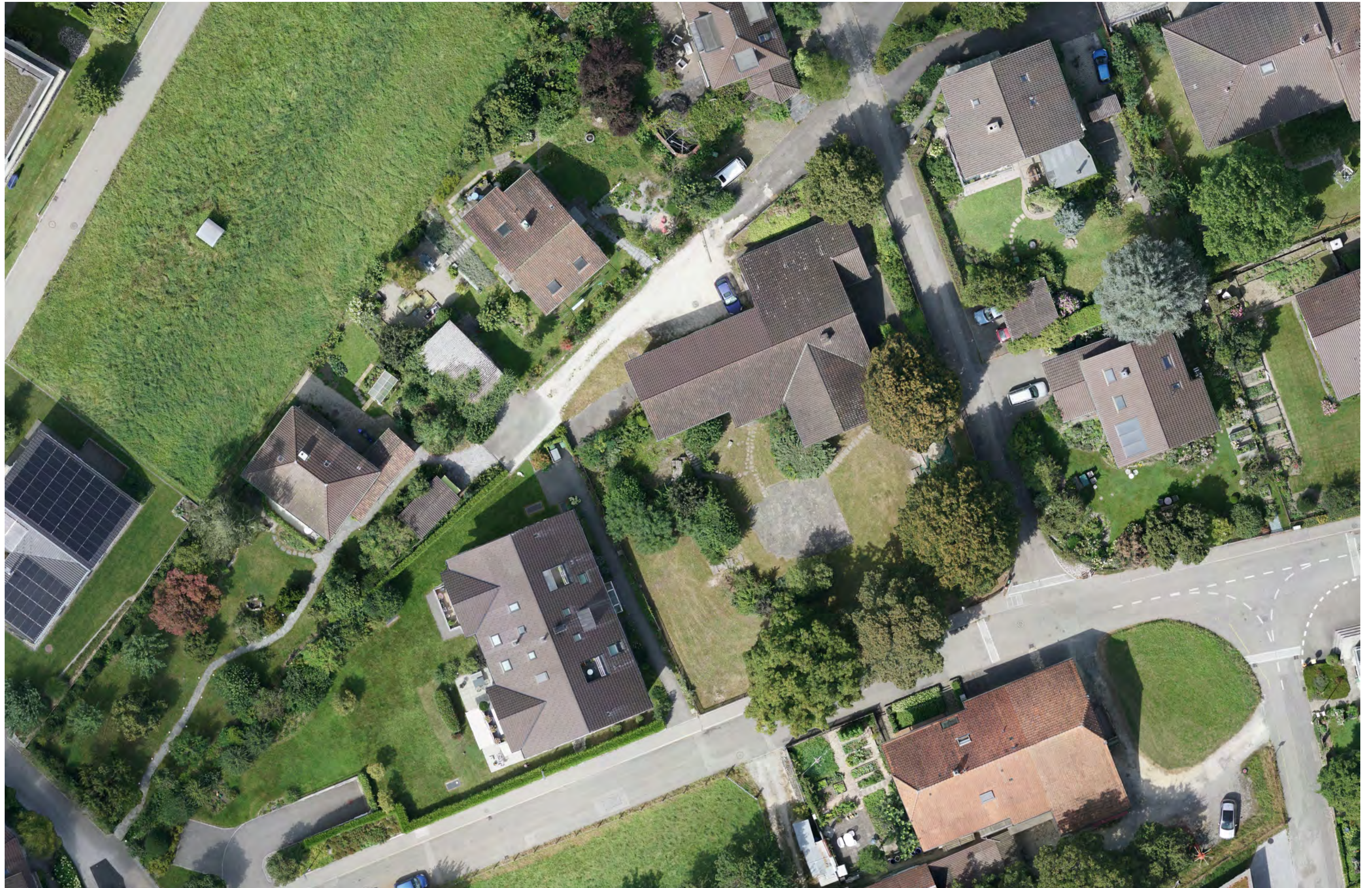
Ansicht Front



Ansicht Seite

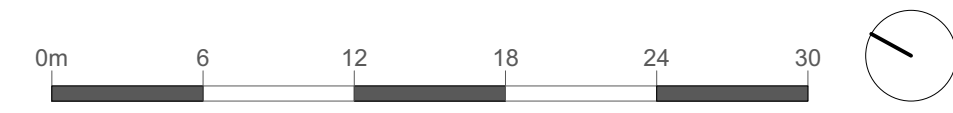
Grundriss





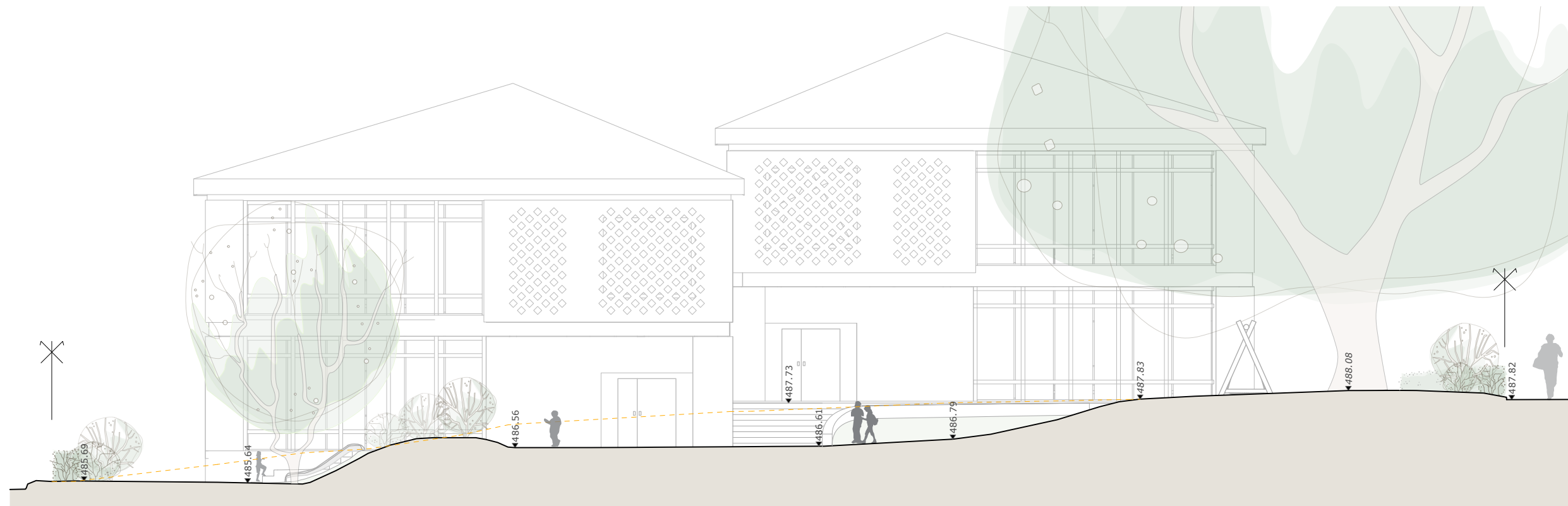


0
1000000
1.351 1220044.781
0.000



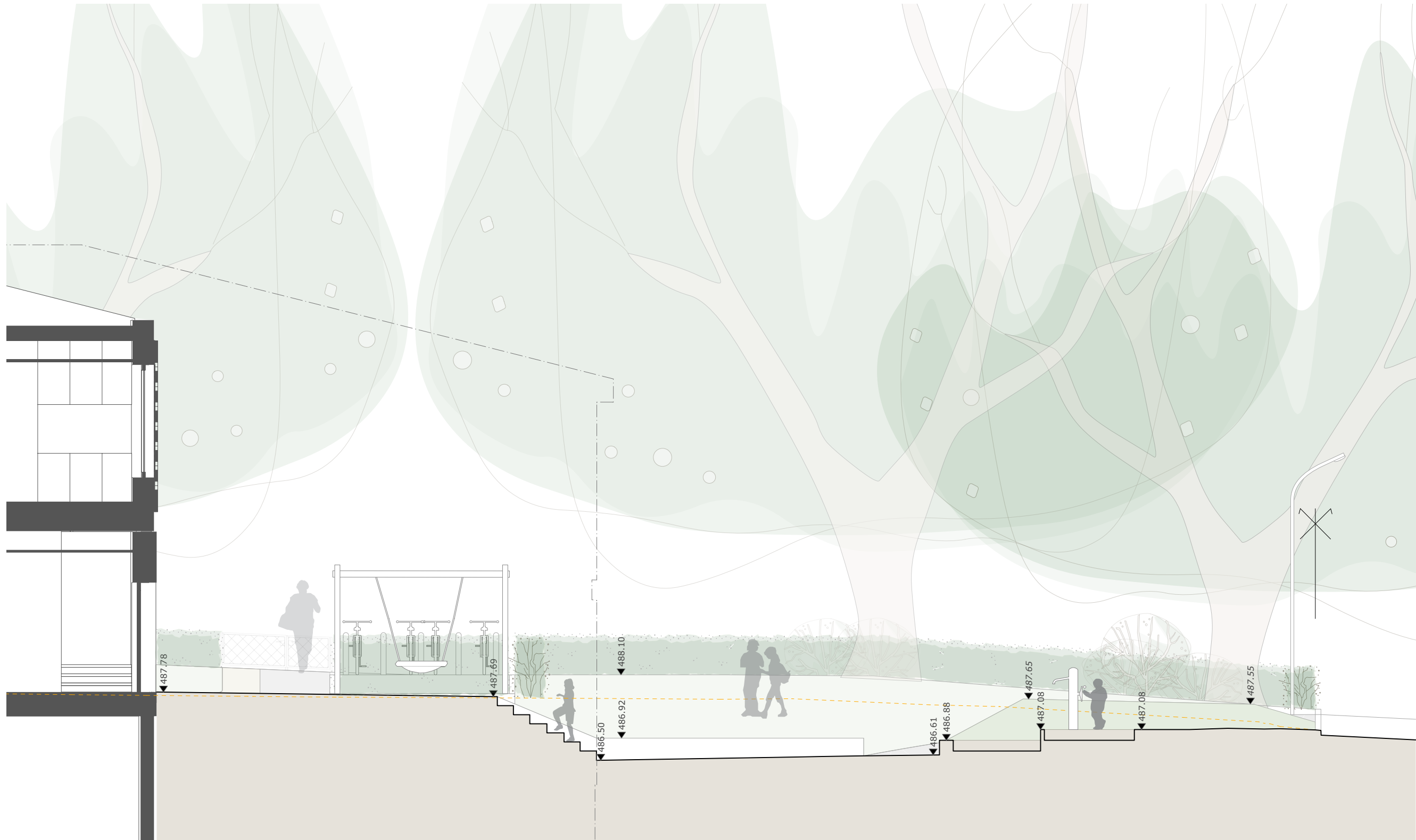


Schnitt A-A' | 1:125



Schnitt B-B' | 1:125



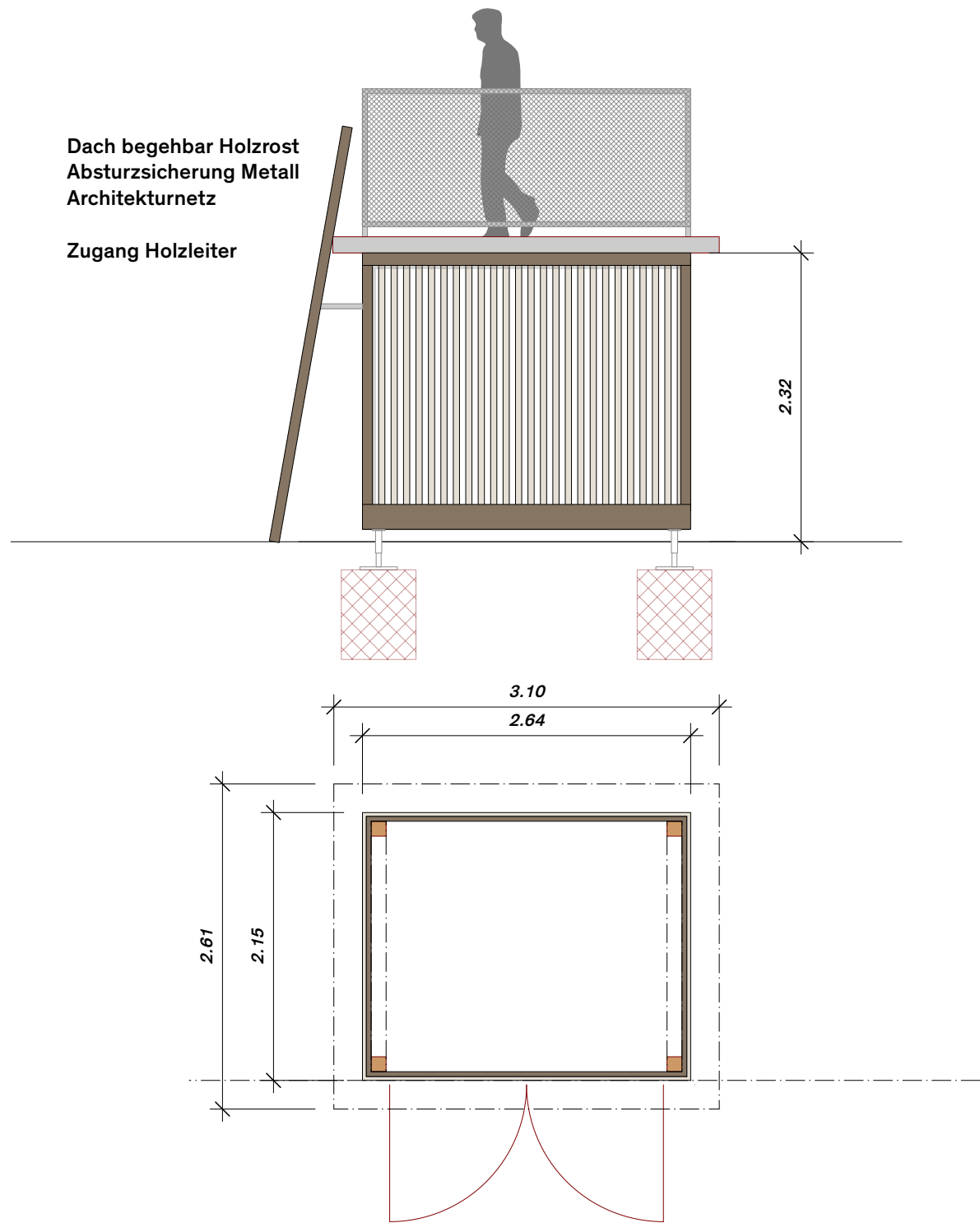


Schnitt C-C' | 1:75



Hubelweg
Nebenzbau A

Ansicht Seite



Grundriss



